

SQP

CANARY WHARF
LONDON

Resale Property



Property Information

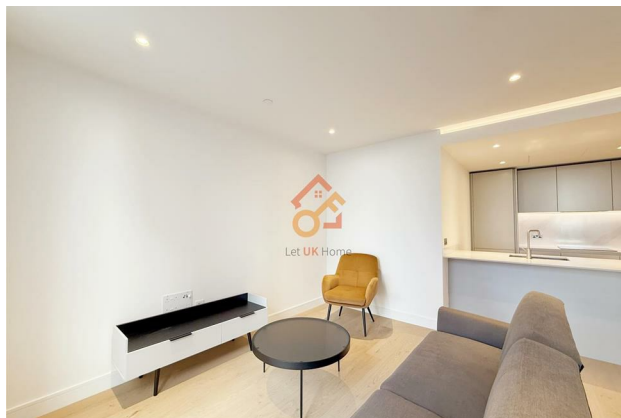
Bed:1 Bath:1

Type: Flat

Price: £3,250 Per Month

67 Marsh Wall London

London E14 9SW



Project Information

Name : South Quay Plaza

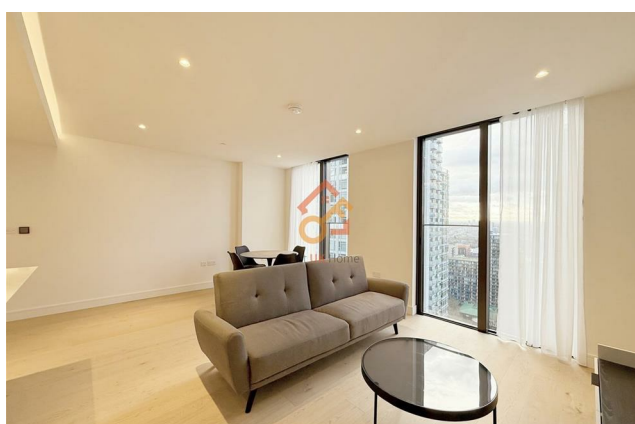
Developer : Berkeley

Address: London E14 9WS

Lease Term: 999 Years

Service charge :

Completion date: 2022



Project Highlight

Developed by the Berkeley Group, the UK's largest and most acclaimed developer—often referred to as the “Hermès of developers”—SQP stands out for its unparalleled construction quality and dedicated service team. Berkeley Group is the only developer to have received the Queen's Award twice, a testament to its excellence and commitment.

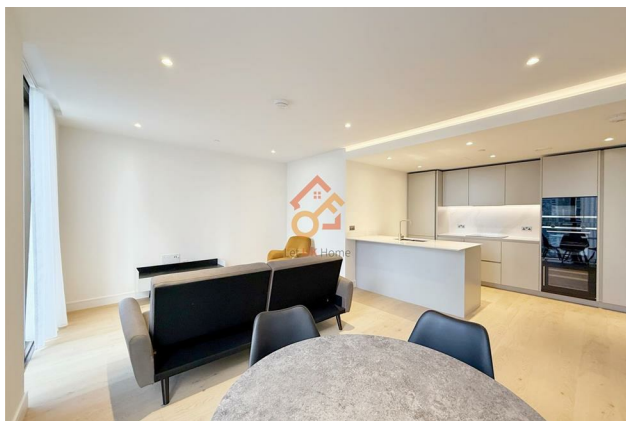
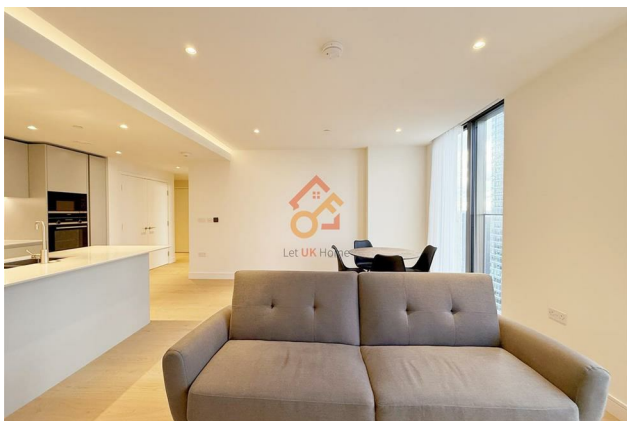
Designed by Foster + Partners, one of the world's leading architectural firms, SQP reflects cutting edge design and timeless elegance. Foster + Partners' portfolio includes numerous iconic buildings worldwide.

The entire 56th floor of SQP is dedicated to an exclusive bar and rooftop viewing platform. SQP owners can become premium members of The Quay Club, which offers five-star facilities including a 20-meter swimming pool overlooking the Southbank Pier, a health club, spa, gym, and treatment rooms.

Only one-third of the SQP site is occupied by buildings, with nearly two-thirds dedicated to public green spaces. These beautifully landscaped gardens feature play areas, seating, and outdoor artworks. Each building is spaced over 30 meters apart east to west and more than 10 meters apart north to south, ensuring a spacious and uncrowded environment.

SQL will rise amidst 2.6 acres of beautifully landscaped gardens, a truly unique setting in central London. South Quay Plaza features elegantly designed interiors, providing residents with a luxurious and comfortable living environment. The open-plan kitchens allow you to enjoy the pleasure of cooking and sharing meals with your family.

The premium surrounding environment and meticulously crafted design ensure that each apartment enjoys its own unique and spectacular views. Full-height floor-to-ceiling windows provide the best vantage point to admire the Canary Wharf skyline, offering breathtaking panoramas at every glance.



Transport Overview

SQL is situated in the heart of Canary Wharf, just a 5-minute walk to the DLR, Underground, and Elizabeth Line, providing seamless access to London's key transport hubs.

